

THE HORIZONS OF BOCA LAGO (PUD)
 BEING A REPLAT OF A PART OF THE "REPLAT OF BOCA LAGO, (PUD)," AS RECORDED IN PLAT BOOK 31, PAGES 62 THRU 71, PUBLIC RECORDS OF PALM BCH. CO., FLA.

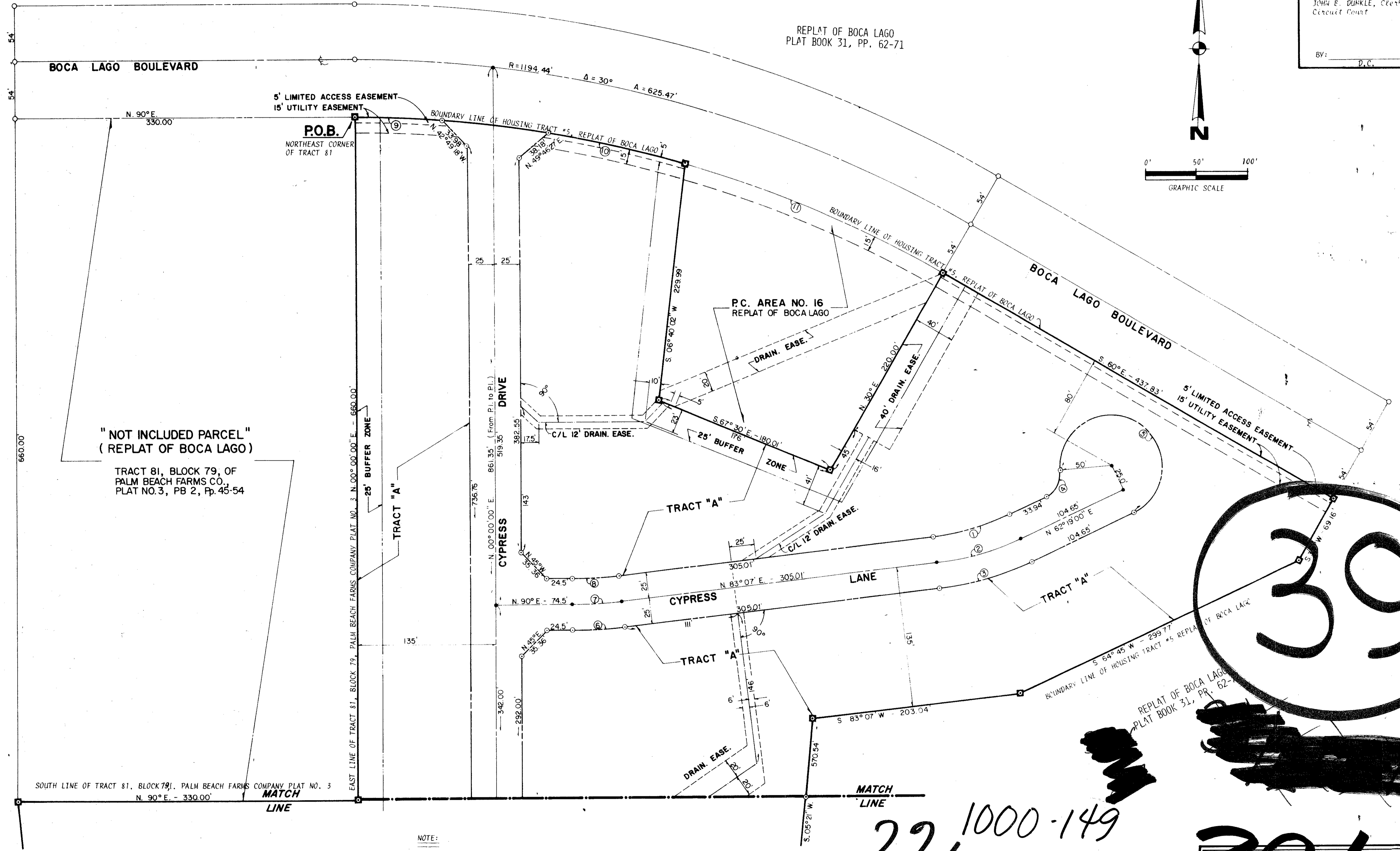
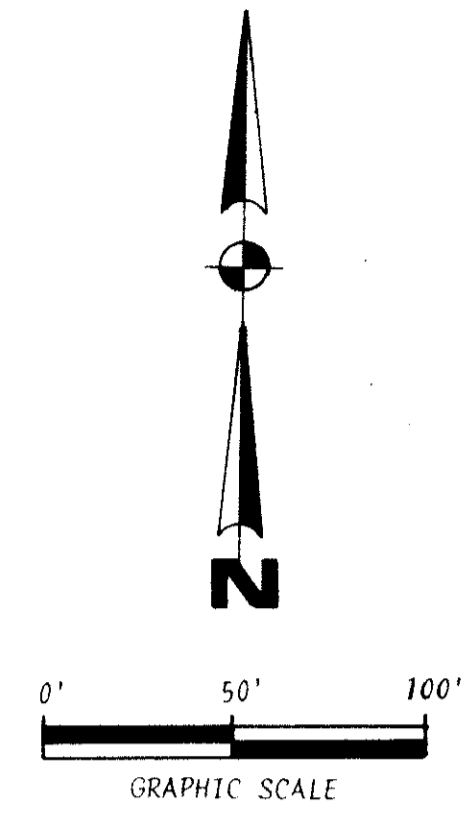
APRIL 1976

17

STATE OF FLORIDA
 COUNTY OF PALM BEACH
 This plat was filed for record
 at _____ M. this _____ day of _____
 AD 1976, and duly
 recorded in Plat Book No. _____
 on Pages _____ thru _____

JOHN E. DUNKLE, Clerk
 Circuit Court

BY: _____
 D.C.

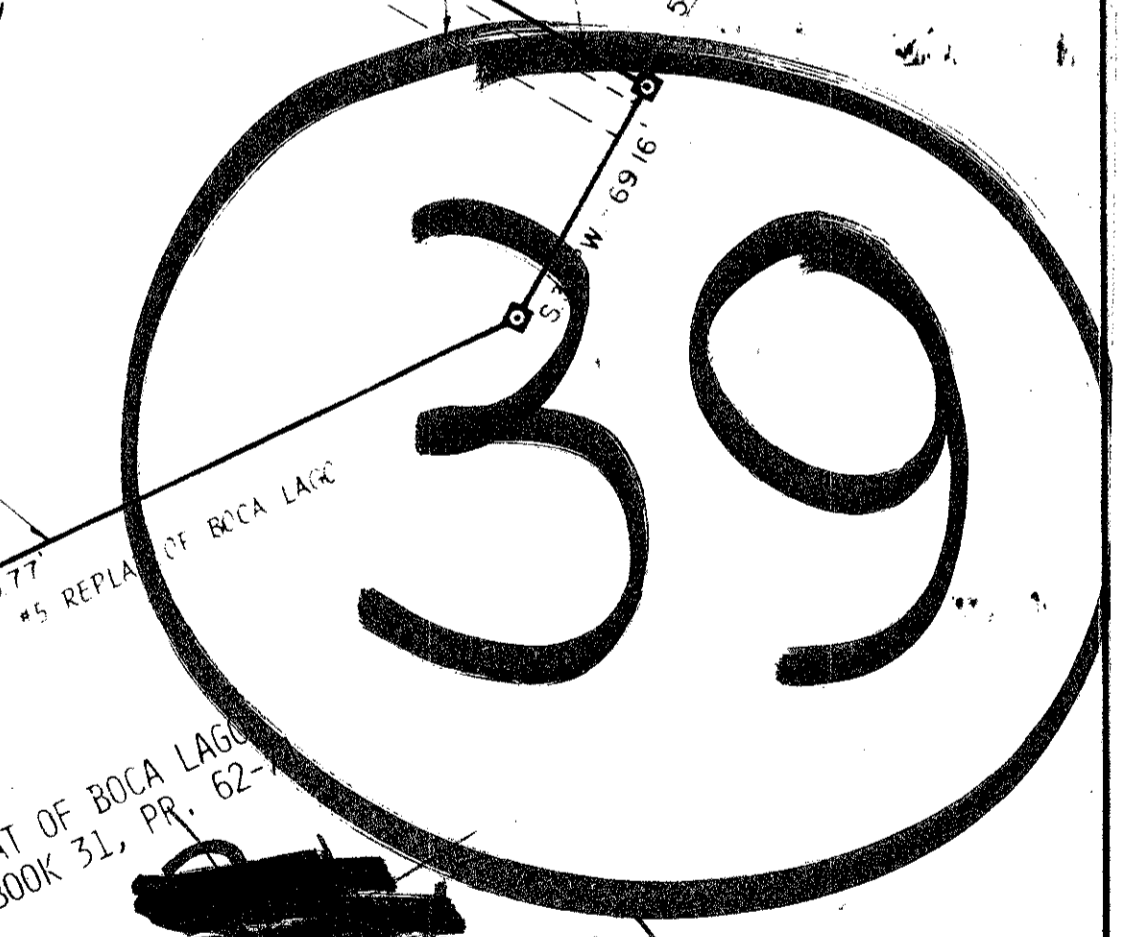


"NOT INCLUDED PARCEL"
 (REPLAT OF BOCA LAGO)
 TRACT 81, BLOCK 79, OF
 PALM BEACH FARMS CO.,
 PLAT NO. 3, PB 2, Pp. 45-54

NOTE:
 FOR CURVE DATA CONSULT THE PROPER LISTING under "CURVE DATA TABLE",
 Sheet 3 of 3.

BOCA LARGO

22 1000-149
 1/47/42



CONRAD W. SCHAEFER CONSULTING ENGINEERS, INC. PALM BEACH COUNTY, FLORIDA			
RECORD PLAT			
DESIGNED NW	DRAWN NW	CHECKED NW	DATE 4-20-76
JOB NO. 1505	FILE NO. 1505	SHEET NO. 2 OF 2	

THIS INSTRUMENT WAS PREPARED BY ROBERT J. WHIDDEN IN THE OFFICES OF BENCH MARK LAND SURVEYING AND MAPPING, phone 689-2111, FOR THE FIRM OF CONRAD W. SCHAEFER CONSULTING ENGINEERS, INC., 2001 PALM BEACH LAKES BOULEVARD, WEST PALM BEACH, FLORIDA, zc4-33409.